

# TRODAT IDEAL i50R PHOTOPOLYMER SYSTEM & STEPS



1 FILM SAMPLE

## IDEAL VELLUM A4



Transparent paper for producing perfect negatives. Very transparent. Accepts toner from laser printers and photocopiers particularly well.



1\_Print

2 NEGATIVE COMPOSITION

## IDEAL DAYLIGHT AQ DAYLIGHT FILM



Daylight film for direct exposure in photopolymer machines.

### IDEAL AQ Sprayer

For use with the AQ activator 1L bottle; can be used repeatedly.

### IDEAL AQ Activator

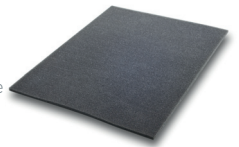
Water-based liquid activator for cleaning exposed DAYLIGHT AQ films.



2a\_Expose film

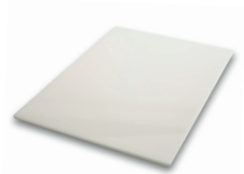
### IDEAL AQ Exposure foam

For protection of DAYLIGHT AQ daylight films during exposure in the photopolymer machine.



### IDEAL AQ Wash out plate

For protecting and stabilising DAYLIGHT AQ films during the cleaning process.



2b\_Clean and protect

3 PHOTOPOLYMER PROCESSING

## IDEAL C SERIES SUBSTRATE



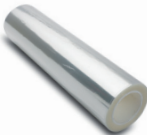
Guarantees a smooth, permeable text plate backing and gives optimal adhesion of developed photopolymer on the stamp.

## IDEAL DAMMING TAPE DT

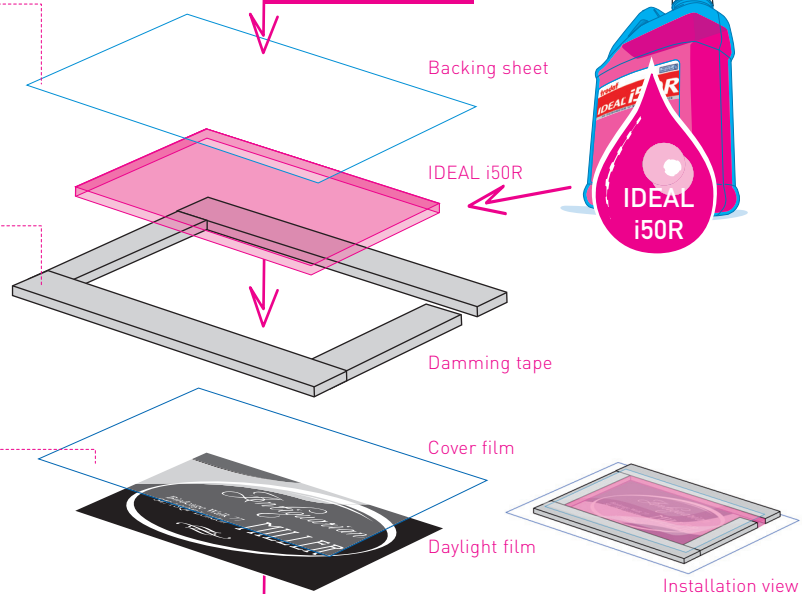


Restricts and seals off fluid photopolymer during processing in the machine. It is glued to the cover film at the edge of the negative. Promotes even text plate height.

## IDEAL COVER FILM CF



Serves as a separating film between the photopolymer machine and the fluid photopolymer. Optimal light transparency and easy to remove from the exposed text plate.



3\_Expose text plate

4 CLEANING

## IDEAL iLW - Liquid wash-out concentrate



You can use IDEAL iLW wash-out concentrate to remove residues from the developed photopolymer plate.

## IDEAL iDfoam



is a de-foamer for spray wash-out equipment.



4\_Wash out photopolymer

## IDEAL iBooster

Softener for use in very hard water.

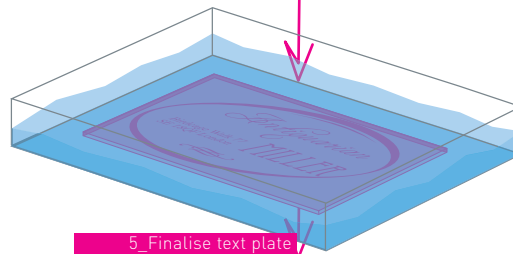


5 POST-EXPOSURE

## IDEAL iPXC — POST-EXPOSURE ADDITIVE



Patented post-exposure additive to prevent possible photopolymer plate stickiness. The product consists of liquid and powder components.



5\_Finalise text plate

